



INDOFINE Chemical Company, Inc.

121 Stryker Lane, Bldg. 30, Suite 1 • Hillsborough, NJ 08844 • U.S.A.

Phone: (908) 359-6778 • FAX: (908) 359-1179

website: www.indofinechemical.com

e-mail: chemical@indofinechemical.com

CERTIFICATE OF ANALYSIS

Catalog Number: 06-1126

Product Name: **ROSAVIN**

CAS Number: [84954-92-7]

Lot Number: 2308844

Chemical Formula: $C_{20}H_{28}O_{10}$

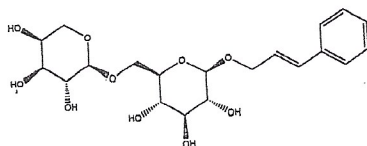
Molecular Weight: 428.43

Appearance: Off-white powder

Water Content: 0.1%

Storage: Store at 2-8°C. Protect from light.

Purity(HPLC): 99.3%



Prepared by:
Ramesh Mandadi
Ramesh Mandadi
Director of Operations

Reviewed and Approved by:
Sujata Moton
Sujata Moton
VP



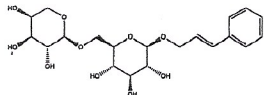
INDOFINE Chemical Company, Inc.

121 Stryker Lane, Bldg. 30, Suite 1 • Hillsborough, NJ 08644 • U.S.A.

Phone: (908) 359-6778 • FAX: (908) 359-1179

website: www.indofinechemical.com

e-mail: chemical@indofinechemical.com



HPLC ANALYSIS

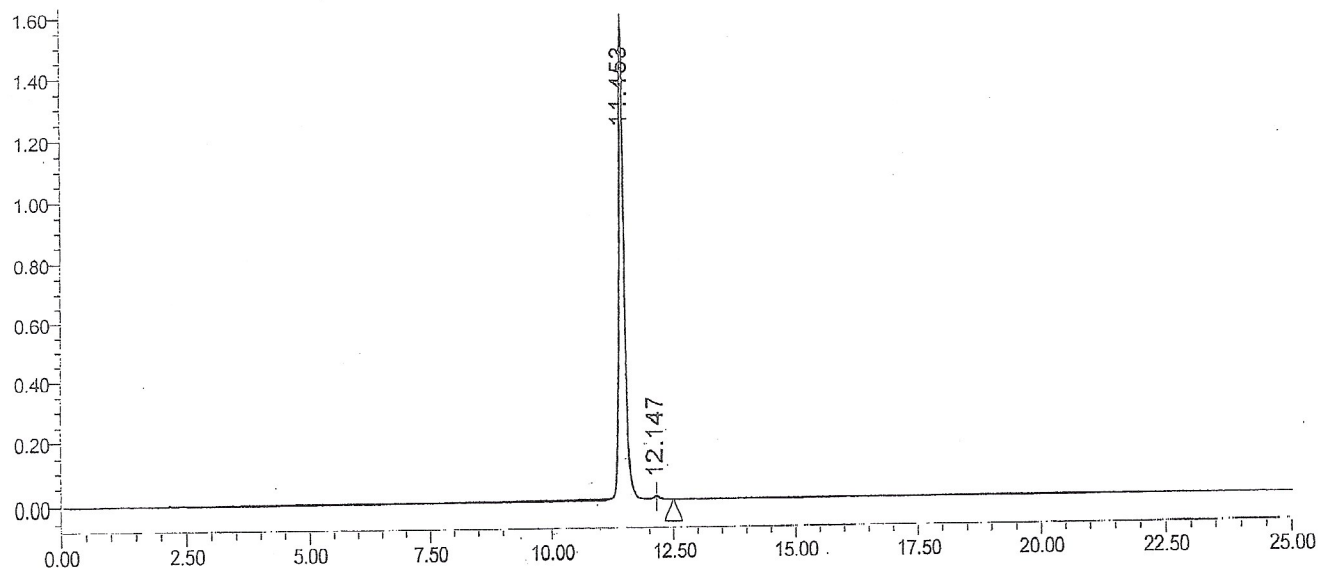
Catalog No.: 06-1126
Product Name: Rosavin
Lot No.: 2308844

SAMPLE INFORMATION

Sample Name: Rosavin
Sample Type:
Vial: 44
Injection #: 1
Injection Volume: 10.00 ul
Run Time: 25.0 Minutes

Acquired By:
Sample Set Name
Acq. Method Set: Rosavin
Processing Method: sample

Auto-Scaled Chromatogram



Peak Results

	RT	Area	% Area	Height	Plate Count	Resolution
1	11.453	11770745	99.30	1562542	61685.48	
2	12.147	82903	0.70	9841	62541.75	3.54

Prepared by:
Ramesh Mandadi
Ramesh Mandadi
Director of Operations

Reviewed and Approved by:
Sujata Moton
Sujata Moton
VP